

THE PEANUT

official newsletter of...



Issue 10, December 2015

Sierra Leone upgrades



Our Sierra Leone factory this Fall received a \$100,000 upgrade thanks to substantial donations from PB Crave and Rotary Club.

1

Holiday events



It's the most exciting time of the year for our St. Louis supporters. Don't miss out on some fun community events. See details below!

2

Ghana partnerships



PPB Ghana looks beyond mere production of peanut-based products to sales & distribution.

3

"Like" us on Facebook for regular updates on our work!

We're on YouTube! Subscribe to Project Peanut Butter's channel to watch the latest videos from factory and clinic.

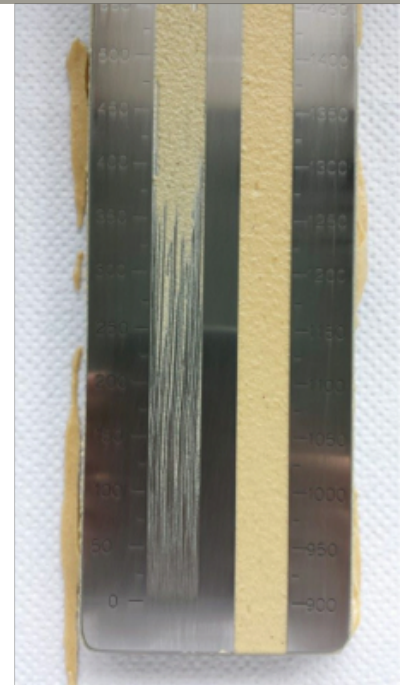
Follow us on Twitter @PPB_RUTF.



Above: Sierra Leone receives new generator from Sweet Harvest Foods.

Sierra Leone receives upgrades

In Sierra Leone this Fall, Project Peanut Butter's factory received a \$100,000 upgrade! Thanks to a generous donation from Sweet Harvest Foods/PB Crave, we were able to replace one of our struggling generators with a brand new generator large enough to sustain the entire production process. And due to yet another substantial grant from Rotary, we were able to purchase and install two new pumps, a new disc mill grinder, and a holding tank into our production line. The disc mill grinder will enable us to grind the particle size of our product even smaller. Smaller particle size results in a smoother product with less oil separation. The holding tank will allow the production team to start a new mix while still packaging the previous one, boosting efficiency and increasing production capacity. The Sierra Leone factory technicians are busy learning how to maintain and operate the new line additions so that production of RUTF can begin anew early next year. ♦



Above Left: A mother feeds her child ready-to-use therapeutic food at a clinic in southern Malawi. Above Right: The Hegman's Gauge is a tool used to measure the particle size of our product. The new disc mill grinder in Sierra Leone helps us achieve a very smooth product (particle size= 400 microns or less).

Join us this season: Plowsharing Crafts and Schon Boutique

It's that time of the year again: the holidays! Project Peanut Butter has two exciting events this season for all of our St. Louis supporters, one of which is annual and one brand new!

On Thursday, December 10, bring true comfort and joy to everyone on your shopping list by purchasing the most charming, ethical gifts imaginable. We're partnering up with Plowsharing Crafts in the Delmar Loop for our annual benefit night! Any item you purchase that evening from 6 to 9 pm will benefit two causes at once; you will support fair wages for skilled artisans all around the world, and 15% of your purchase will go to Project Peanut Butter. If you can't stop by the store that evening, no worries; you may come in during any time that day (December 10th only) and ask that your sale count towards the PPB fundraiser.

Plus, just when you think your holiday parties and overconsumption of delicious foods and beverages will be over as you ring in the New Year... think again. On Friday, January 15, Schon Boutique on The Boulevard (across from the Galleria) will be hosting a gallery event to benefit Project Peanut

Butter. Schon is an eclectic boutique offering original artwork from more than 80 local artists. The event will be held from 5:30 to 9pm. The gallery will be serving an array of light appetizers and desserts as well as wine and beer selections, and artwork (made by local artists and priced \$500 and below) will be on display and for sale. There is a suggested donation of \$10 at the door, 100% of which will go to Project Peanut Butter. Schon Boutique has written over \$60,000 in checks to local charities over the years from these benefit nights! We will be letting you know in the next few weeks via email and Facebook how you can RSVP to this event and receive a free goodie bag.

Project Peanut Butter's work depends on the support of our donors and friends all around the country and world—not just in St. Louis. If you'd like to make a holiday contribution but can't attend these events, you may always do so with ease online at: www.projectpeanutbutter.org/donate/, or the good old-fashioned way: 7435 Flora Ave, St. Louis MO 63143. Thank you so much, and happy holidays to you and yours! ♦

PPB Ghana fosters meaningful partnerships

Operation PPB Ghana continues to evolve, looking beyond mere production of peanut-based products to sales and distribution. In late October, PPB Ghana funded a 4-day CMAM (community management of acute malnutrition) training for 47 health workers in Atebubu district, Ghana. The district will be the first in Ghana to use RUTF produced in our Kumasi factory. This training marked an important first step towards getting more kids properly screened for malnutrition and enrolling sick kids on community-based treatment.

In addition to producing RUTF for severely malnourished kids and the Vivi supplement for Hershey's school feeding program, PPB Ghana also hopes to collaborate with the World Food Program to produce a RUSF (ready to use supplemental food) for moderately malnourished kids. Formulation and logistical planning are underway.

In Mid November, the US Department of Agriculture Deputy Secretary, Krysta Harden, visited Kumasi and PPB with a large delegation of state agriculture reps. It was great to show them our facility and discuss the difference we're making in the lives of children with local and American agricultural inputs.

The enthusiasm shown by PPB Ghana staff and other groups hoping to get involved with the Kumasi-based project is inspiring. We are eager to watch as PPB Ghana develops into a finely tuned, lifesaving machine over the coming months! ♦

PPB Ghana hopes to collaborate with the World Food Program to produce a RUSF for moderately malnourished kids.



Above: PPB Ghana production staff package RUTF
Below: CMAM training in Atebubu district



Below: USDA Deputy Secretary Krysta Harden tours factory with PPB Ghana Quality Manager Jonas Sebigbon



Project Peanut Butter
7435 Flora Ave
St. Louis, MO 63143

Phone: +1 (314) 646-7191
Email: info@projectpeanutbutter.org
Website: www.projectpeanutbutter.org